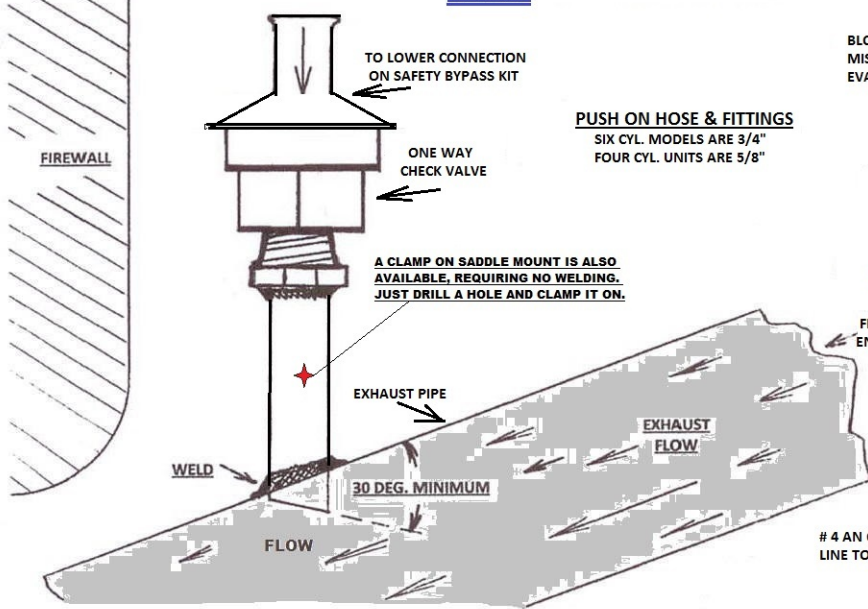
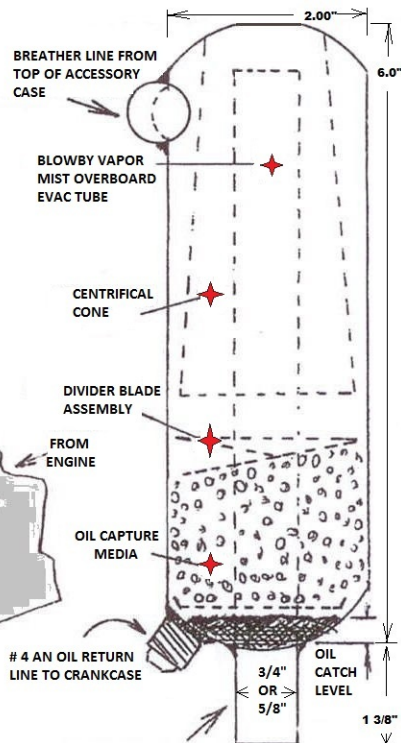


# OIL SEPARATOR - CRANKCASE VACUUM EVACUATION VALVE & SAFETY RELIEF SYSTEM INSTALLATION

## DETAIL



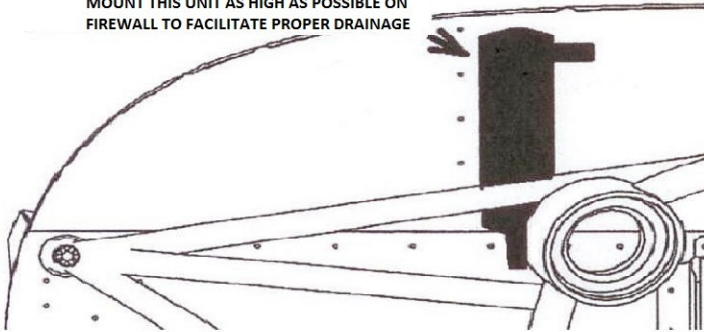
**PUSH ON HOSE & FITTINGS**  
SIX CYL. MODELS ARE 3/4"  
FOUR CYL. UNITS ARE 5/8"



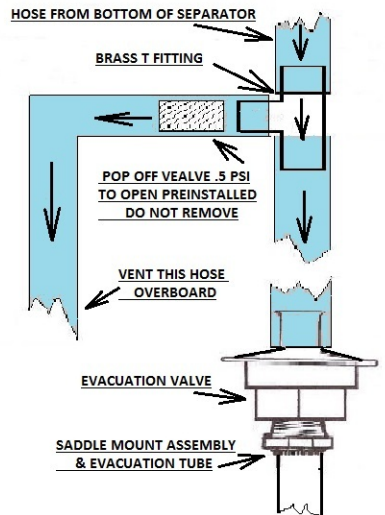
NEW BREATHER LINE TO BE VENTED OVERBOARD OR TO SAFETY BYPASS T ASSEMBLY AND VACUUM SYSTEM

## PREFERRED OIL SEPARATOR MOUNTING LOCATION ON FIREWALL

MOUNT THIS UNIT AS HIGH AS POSSIBLE ON FIREWALL TO FACILITATE PROPER DRAINAGE



## DETAIL FOR "SAFETY" BYPASS" KIT INSTALLATION



### IMPORTANT REQUIRED SYSTEM MAINTENANCE

IT IS VERY IMPORTANT TO CHECK THE EVACUATION TUBE WHERE IT ENTERS THE EXHAUST PIPE AT EVERY OIL CHANGE OR 50 HRS. THIS INSPECTION IS TO REMOVE ANY COKING OR BUILDUP THAT COULD IMPAIR THE FREE FLOW OF CRANKCASE BLOWBY FROM EXITING THE ENGINE. EVEN WITH THE SAFETY BYPASS INSTALLED THIS INSPECTION IS NECESSARY TO ENSURE THE PROPER OPERATION OF THE EVACUATION SYSTEM. IF EXCESSIVE BUILDUP IS FOUND THEN MORE FREQUENT INSPECTIONS ARE INDICATED