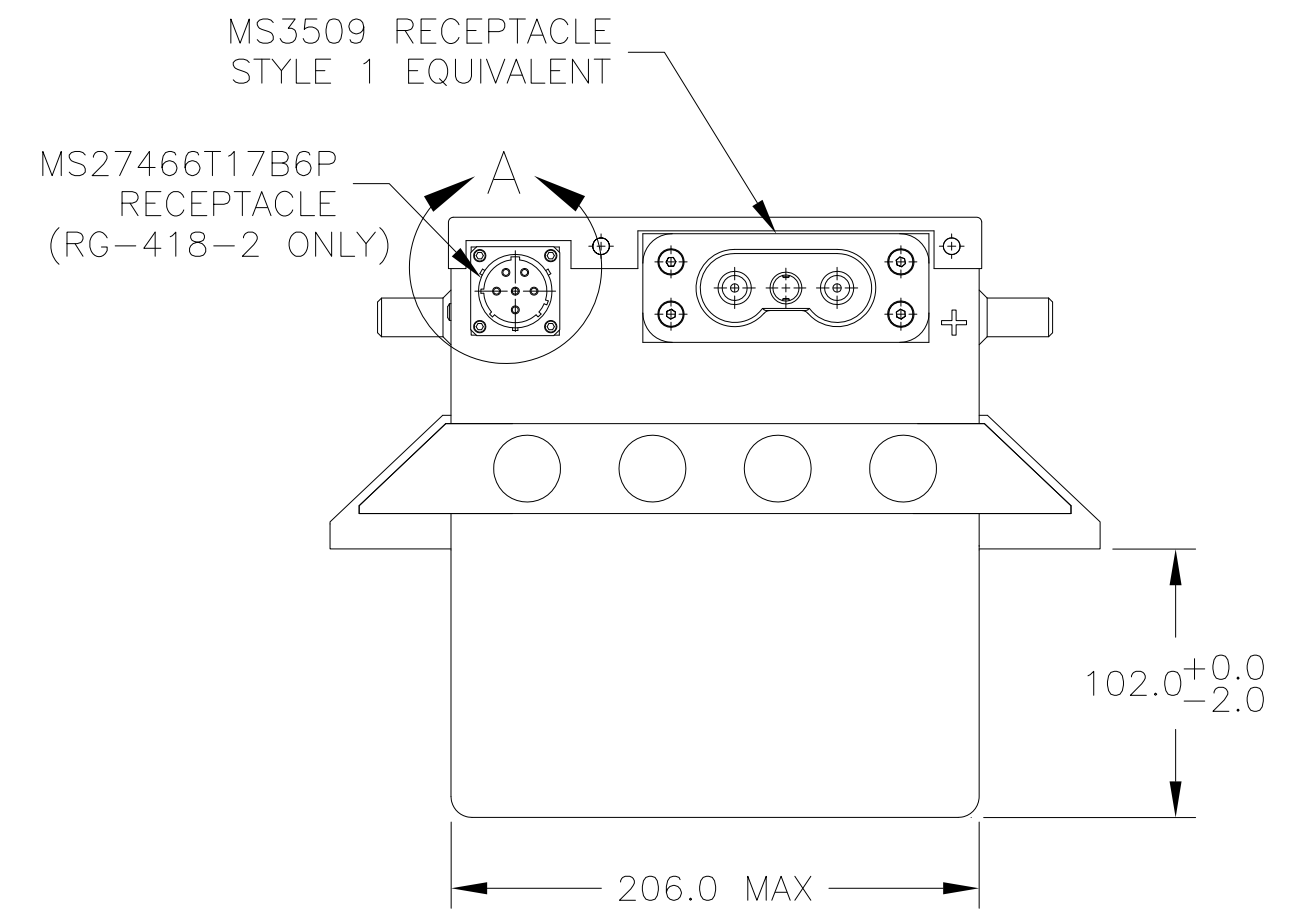
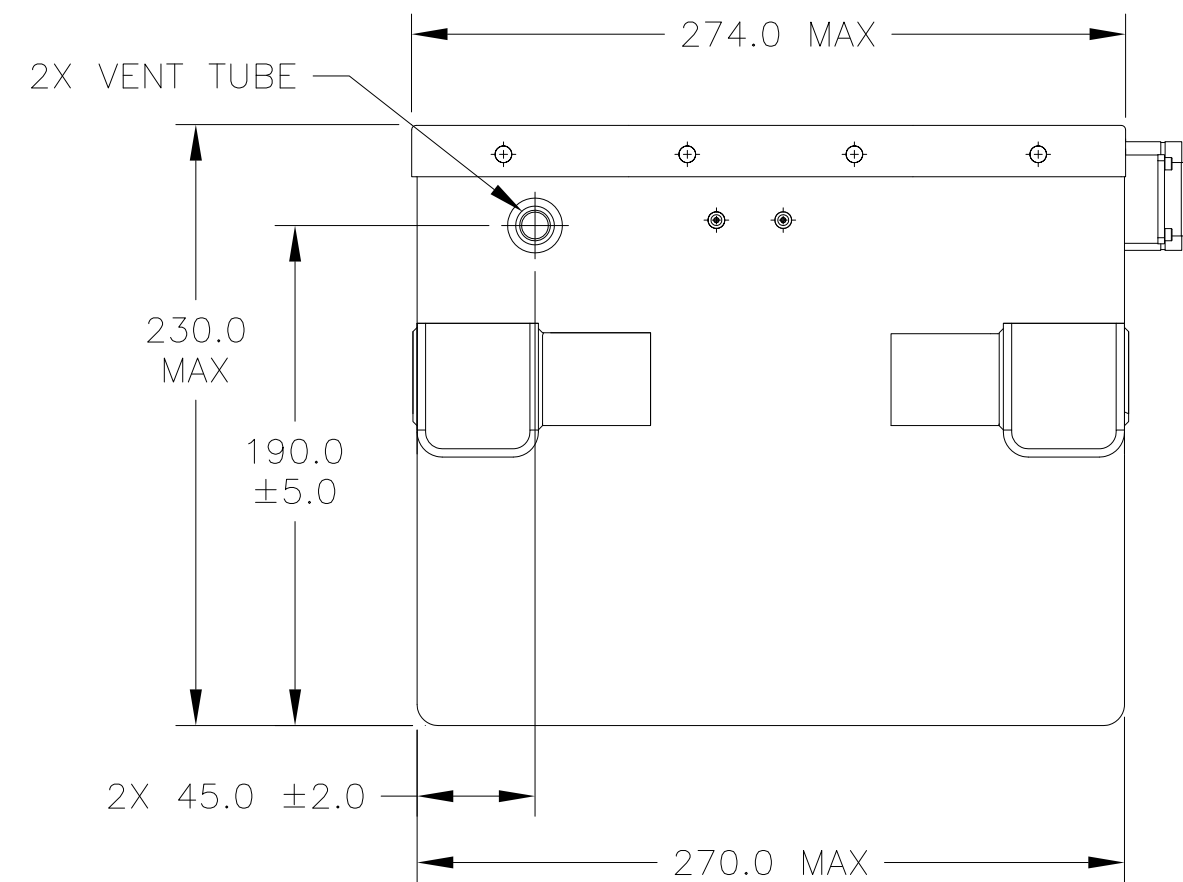
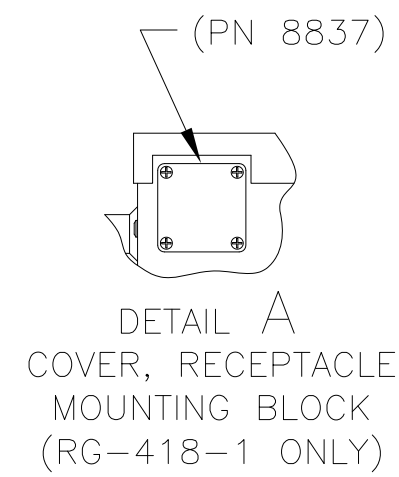
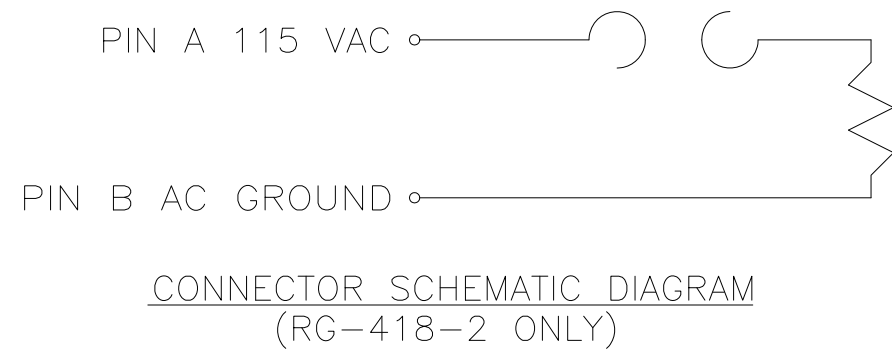
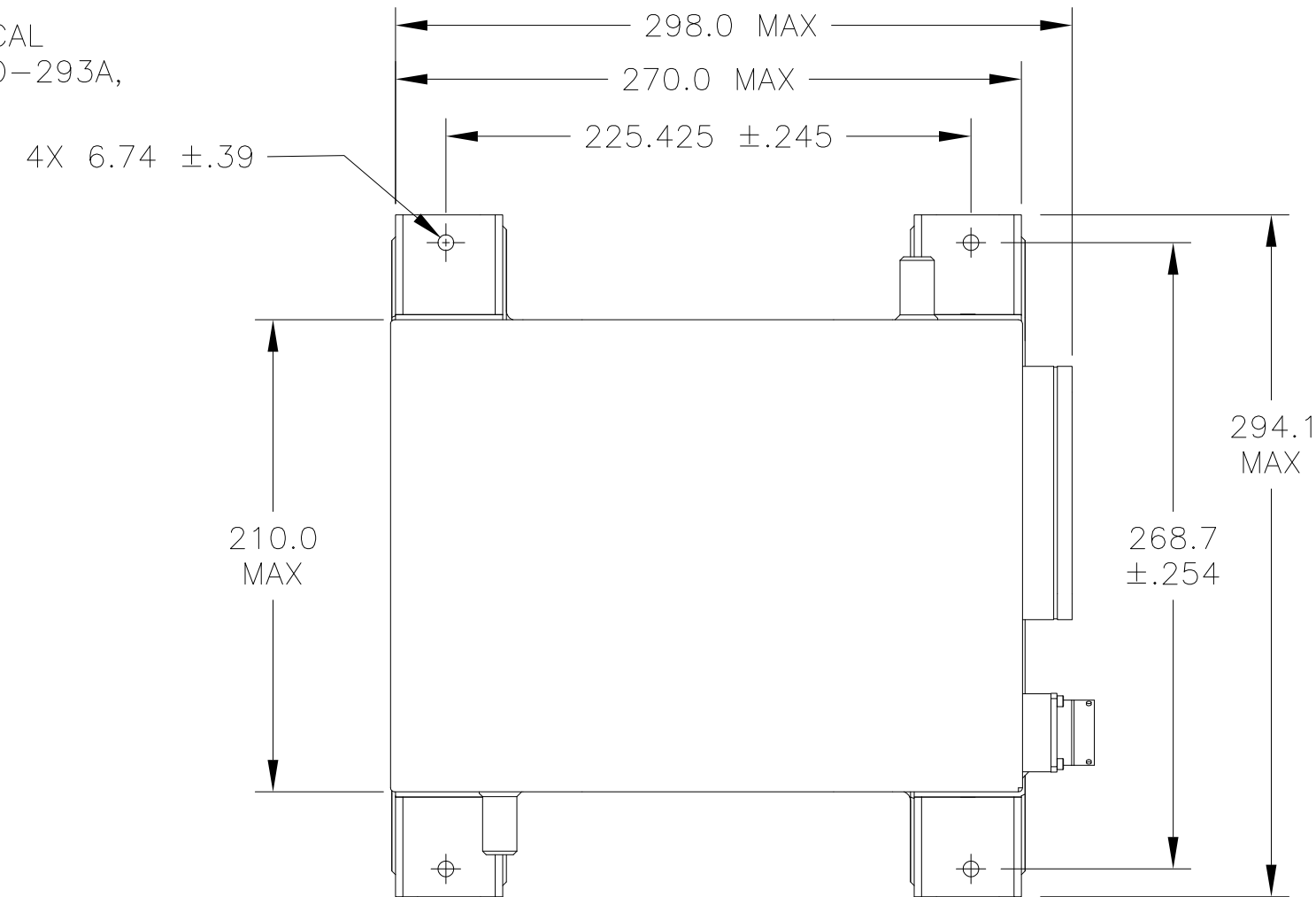


NOTES: UNLESS OTHERWISE SPECIFIED

1. MANUFACTURED AND INSPECTED IAW AS9100 QUALITY SYSTEM REQUIREMENTS.
2. SEE DRAWING NO. CB-00246 AND PROCEDURE P-1000 FOR ASSEMBLY AND TEST INSTRUCTION. PROCEDURES AND ASSEMBLY DRAWINGS ARE FOR INTERNAL USE ONLY.
3. BATTERIES ARE RATED IAW INTERNATIONAL ELECTROTECHNICAL COMMISSION STANDARD 60952-1 AND RTCA STANDARD DO-293A, UNLESS OTHERWISE NOTED.

REVISIONS			
REV	DESCRIPTION	DATE	APPROVED
A	UPDATED CONTAINER, ADDED LIFTING STRAPS	6/13/07	JBT
B	ADDED POWER RATINGS AT 23C & -30C, UPD NOTES 2 & 4	2/25/09	JBT
C	UPDATED C1 CAPACITY, POWER RATINGS, INTERNAL HEATER INPUT CURRENT, COVER VIEWS, TITLE & NOTES	1/26/17	PH



ENVELOPE DRAWING

PART NUMBER	RG-418-1	RG-418-2
MAXIMUM WEIGHT	63.9 LBS [29 KG]	63.9 LBS [29 KG]
RATED CAPACITY, C ₁	28 AH	28 AH
POWER RATING AT 23°C	lpp 1350 A, lpr 950 A	lpp 1350 A, lpr 950 A
POWER RATING AT -18°C	lpp 1025 A, lpr 800 A	lpp 1025 A, lpr 800 A
POWER RATING AT -30°C	lpp 800 A, lpr 600 A	lpp 800 A, lpr 600 A
INTERNAL AC HEATER	NONE	1.74A @ 115V

QTY REQD	CAGE CODE	PART OR IDENTIFYING NO.	NOMENCLATURE OR DESCRIPTION	MATERIAL SPECIFICATION	ITEM NO.
PARTS LIST					
UNLESS OTHERWISE SPECIFIED DIMENSIONS ARE IN MILLIMETERS TOLERANCES ARE:		CONTRACT NO.		CONCORDE BATTERY CORPORATION 2009 SAN BERNARDINO RD, W. COVINA, CA 91790	
FRACTIONS	DECIMALS	ANGLES	APPROVALS	DATE	TITLE
	.xx ±		DRAWN	RM	7/16/03
	.xxx ±		CHECKED	AMIII	10/22/03
TREATMENT	NA		APPROVED	JBT	11/3/03
FINISH	NA		ISSUED	JG	1/30/17
SIMILAR TO	ACT WT	CALC WT	CAGE CODE		DWG. NO.
			63017		RG-418
			SCALE	1/3	REV C
				SHEET	1 OF 1