

Illustrated Parts List

Wheel Assembly – Main, External 5.00-5

40-12, 40-12A, 40-78, 40-78A, 40-78B, 40-78E, 40-78J, 40-151, 40-151A, 40-230, 40-308

Tubeless and Tube-Type

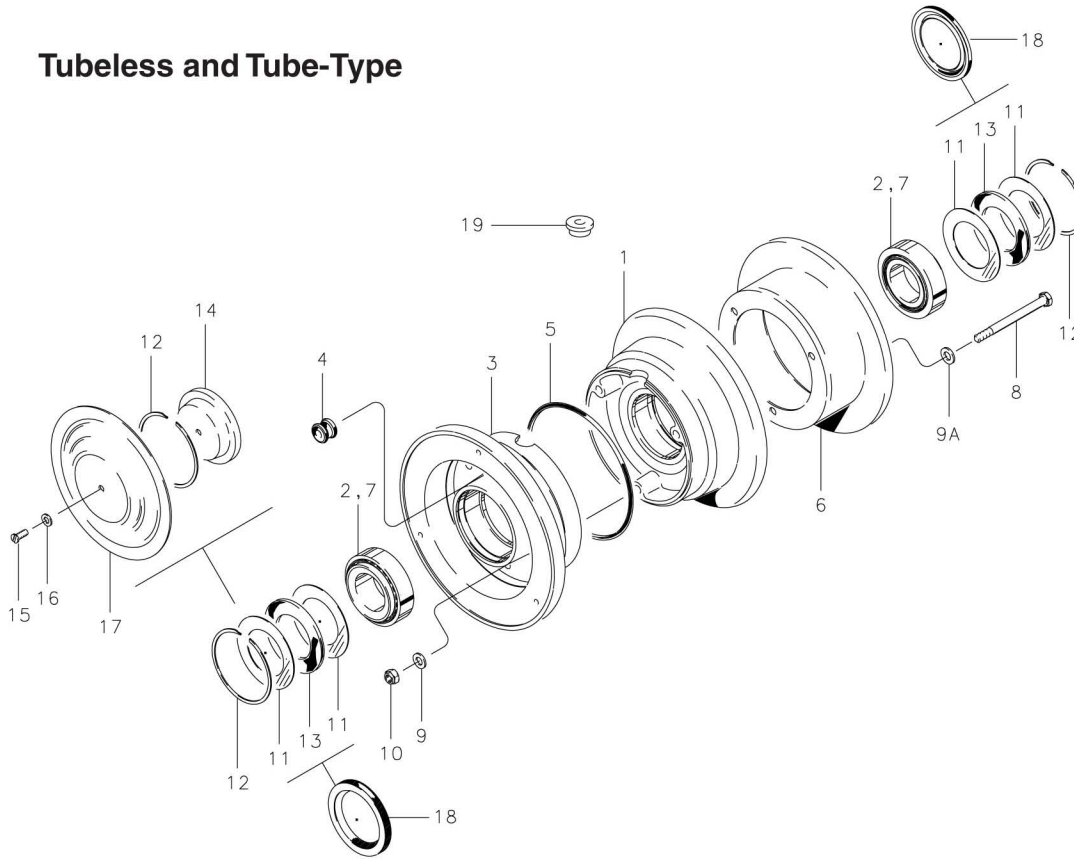


FIG.	PART NUMBER	DESCRIPTION	PER ASSY.												
			40-12 (1)	40-12A (1)	40-78 (2) (4)	40-78A (2) (4)	40-78B (2) (4)	40-78E (2)	40-78J (2) (4)	40-151 (2)	40-151A (2)	40-230 (2)	40-308		
1	161-00500	Inner Wheel Half Assembly	1	1											
	161-03100	Inner Wheel Half Assembly			1		1	1		1		1			
	161-14300	Inner Wheel Half Assembly				1									
	161-04100	Inner Wheel Half Assembly							1		1				
	161-24000	Inner Wheel Half Assembly													1
2	214-00300	Cup-Bearing	1	1	1		1	1	1	1	1	1	1		
	214-05100	Cup-Bearing				1									
	214-03200	Cup-Bearing													1
3	162-00500	Outer Wheel Half Assembly	1	1											
	162-02800	Outer Wheel Half Assembly			1		1	1		1		1			
	162-13100	Outer Wheel Half Assembly				1									
	162-03900	Outer Wheel Half Assembly							1		1				
	162-24000	Outer Wheel Half Assembly													1
2	214-00300	Cup-Bearing	1	1	1		1	1	1	1	1	1	1		
	214-05100	Cup-Bearing				1									
	214-03200	Cup-Bearing													1
4	217-00100	Grommet			1	1	1	1	1	1	1	1	1	1	1

(Continued on next page)

40-12, 40-12A, 40-78, 40-78A, 40-78B, 40-78E, 40-78J, 40-151, 40-151A, 40-230, 40-308

Tubeless and Tube-Type

(Continued from previous page)

FIG.	PART NUMBER	DESCRIPTION	PER ASSY.													
			40-12 (1)	40-12A (1)	40-78 (2) (4)	40-78A (2) (4)	40-78B (2) (4)	40-78E (2)	40-78J (2) (4)	40-151 (2)	40-151A (2)	40-230 (2)	40-308			
5	101-07200	O-Ring (MS28775-244)	1	1												
6	164-00400	Brake Disc	1	1												
	164-01700	Brake Disc			1	1	1		1							1
	164-08500	Brake Disc									1	1				
	164-09900	Brake Disc													1	
	164-11700 (3)	Brake Disc - Chrome			1	1	1		1							
	164-24200 (5)	Brake Disc - Performance Gold			1	1	1		1							
7	214-00400	Cone-Bearing	2	2	2		2	2	2	2	2	2	2	2		
	214-05000	Cone-Bearing				2										
	214-03300	Cone-Bearing														2
8	103-10500	Bolt (AN4-22A)			3	3	3	3	3	3	3	3	3	3	3	3
	103-10800	Bolt (AN4-31A)	3	3												
9	095-10200	Washer (AN960-416L)	3	3	3	3	3	3	3	3	3	3	3	3	3	3
	095-10400	Washer (AN960-416)														3
9A	095-10200	Washer (AN960-416L)	3	3												
10	094-01200	Nut (MS21042-4)			3	3	3	3	3	3	3	3	3	3	3	3
	094-10300	Nut (MS21044-N4)	3	3												
11	153-00800	Ring-Grease Seal	2	2	4	4	4	4	4	4	4	4	4	4	4	
12	155-00200	Snap Ring	2	2	2	2	2	2	2	2	2	2	2	2	2	2
13	154-00600	Felt-Grease Seal	1	1	2	2	2	2	2	2	2	2	2	2	2	
14	158-00500	Hub Cap	1	1												
15	102-25100	Screw (AN526-1024-8)	1	1												
16	095-15400	Washer-Lock (AN936A10)	1	1												
17	157-00500	Dust Shield	1													
18	154-03200	Molded Grease Seal														2
19	217-30653	Grommet														1

NOTES:

- (1) Use Tubeless Tire with needle inflation. (2) Use Tube-Type Tires. (3) Alternate chrome plated disc.
- (4) Also available with chrome plated disc. To order, specify assembly number followed by "CHROME."
- (5) Performance gold disc no longer available.