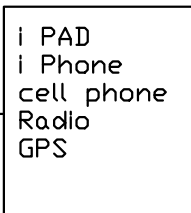
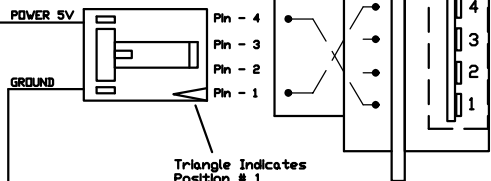
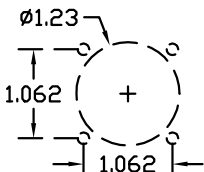


# LS03-05105 MS USB

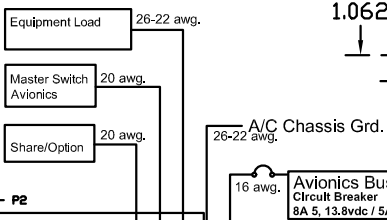
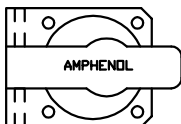
AMPMODU Connector (5-103958-3)  
Top View



## PANEL CUT OUT



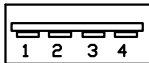
## TOP VIEW



## USB PIN OUT

PIN	NAME	CABLE COLOR	DESCRIPTION
1	VCC	RED	+5 VDC
2	D-	WHITE	2.7 VDC
3	D+	GREEN	2.0 VDC
4	GND	BLACK	GROUND

## USB FEMALE RECEPTACLE



## Connector Kit:

PN: LS03-05026 db-25 pin size  
5 pins, 10 amp solder cup, GP

## DC Converter / MS-USB Kit:

PN: LS03-05105  
Includes:  
(LS03-05003-005)24-5vdc converter (LS03-05050)amphenol panel mt.  
(LS03-05026)converter connector kit & Male ampmodu connector with pins

## Bonding Requirments:

Connection to ground comes from Pin (2). Bonding to structure or chassis is not required.

## Isolation Resistance:

1m Ohm Per Contact

LONE STAR AVIATION, INC.  
604 S. WISTERIA ST.  
MANSFIELD, TX 76063  
682-518-8882  
682-518-8831 FAX

REVISIONS					
REV	ECN #	ZONE	DESCRIPTION	DATE	APPROVED
REV-0			initial release/dc conv. ipad charger	9-23-11	9-23-11
REV-1			Revised Drawing	11-18-11	11-18-11

## Mounting Limitations:

Mount DC Converter in electronics bay or cabin equipment rack near on board avionics equipment or electronics.  
Mount converter vertical or horizontal.

Mounting Hardware Table		
Item	Description	Quantity
1	AN 526 Screw 6-32 R	4
2	AN 960 Washer	4
3	AN356-632- Locknut	4

## Operating Instructions:

None: This device converts 28 vdc to 5.0 to a max current of 7.5 amperes without any adjustments or control from the operator.

**Note:** Install the (positive Vin) input to the aircraft buss with the appropriate 16 Awg. wire. Install the ON/OFF Terminal to the Avionics Buss/ Master Switch with 20 awg wire. Tying P4 (On/Off) to 28 vdc will turn ON the unit.

## iPad Charging Circuit:

LS03-05105 outputs voltage along data pins that makes it compatable with apple products as well as most devices that are charged by USB.

**Remote On/Off** = Left piano tab down,  
Right tab up.

**Direct Power** = Left piano tab up,  
Right tab down.

## Product Specifications:

Input Voltage: 20-42 vdc  
Output Voltage: 5.0 vdc  
Output Current: 7C, 7.5P amps  
Physical Dimensions: 2.50W x 3.70D x 1.00H  
Weight: 3.88 oz. 110g  
TSO: C71  
Circuit Breaker Recom: (8a) - 5vdc  
Testing: RTCA/DO-160D

Rear Accessory Panel LED Indicators  
Remote Control: DIP/Switch  
On= T/R-B/L   
Off=T/L-B/R   
Voltage Adjustment: 5.0=4.5-6.25vdc

## Part No. / Output:

LS03-05003-005 5.0 vdc, 7.5A

## Product Limitations:

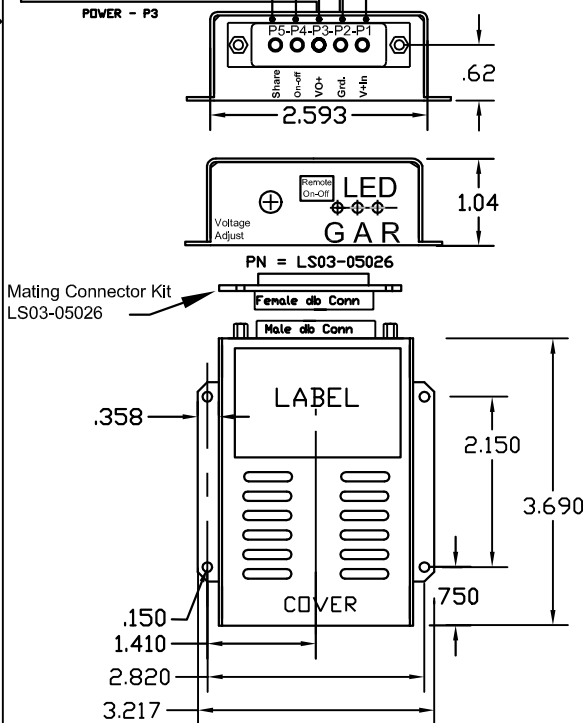
Maximum Voltage Input: 20-60 vdc  
Maximum Output Voltage: 5.0  
Maximum Output Current: 7.5P  
Maximum High Temperature: +70°C  
Maximum Low Temperature: -55°C  
Maximum Altitude: 50,000 ft  
TSO Category: Category A

## Equipment Inspection: Annual

Visual inspection for the following:  
1. Hardware: Check for loose components.  
2. Terminal Strip: Check input and output screws.

## Damaged Equipment Procedure:

If equipment fails to function or meet original specification call the factory for a replacement.



ITEM #	QTY.	PART NO.	DESCRIPTION
UNLESS NOTED OTHERWISE TOLERANCE BLOCK: DIMENSIONS ARE IN INCHES			
DECIMALS	XX ±.030	ANGULAR	±1°
	XXX ±.005		
	XXXX ±.0005		
APPROVALS			DATE
DD NOT SCALE DRAWING	DRAWN BY LMD		10-21-11
MATERIAL	N/A	APPROVED BY JRM	10-21-11
FINISH	N/A	NEXT ASSY.	
TITLE			DC Converter / MS-USB Kit
SIZE A			DWG NO. LS03-05105
SCALE NONE			SHEET 1 of 1

