

EXHIBIT A-102

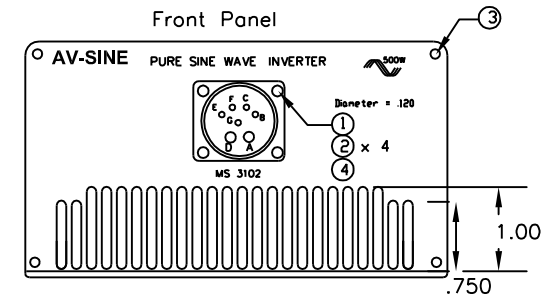
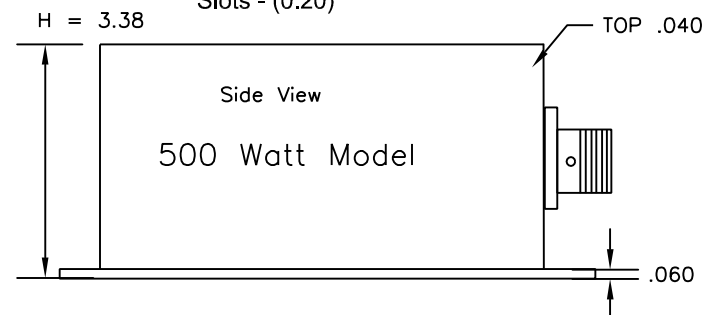
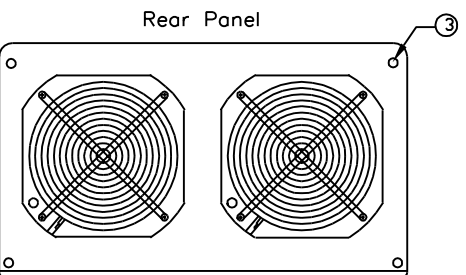
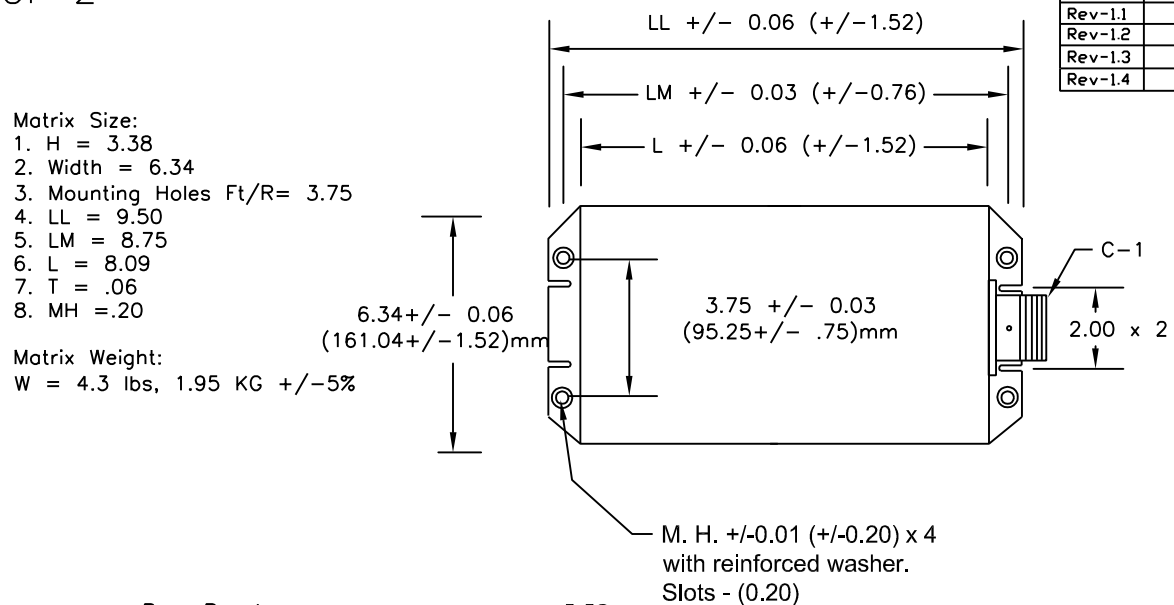
1 OF 2

Matrix Size:

1. H = 3.38
2. Width = 6.34
3. Mounting Holes Ft/R= 3.75
4. LL = 9.50
5. LM = 8.75
6. L = 8.09
7. T = .06
8. MH = .20

Matrix Weight:

W = 4.3 lbs, 1.95 KG +/-5%



| PINS | MODEL 500 watts |
|------|------------------------------|
| A | DC INPUT +28vdc |
| B | OUTPUT 115 VAC, 60hz |
| C | OUTPUT RETURN, NEUTRAL |
| D | DC INPUT RETURN, CHASSIS GND |
| E | REMOTE ON-OFF (GRD for ON) |


C1 = MS Connector
MS 3102 E18-9S Bulk Head
Mate With
J1 = MS 3106 E18-9P Connector End

| REVISION BLOCK | | | | | |
|----------------|-------|------|-----------------------------------|----------|---------|
| REV | ECO # | ZONE | DESCRIPTION OF CHANGE(S) | DATE | CHANGED |
| Rev-1.0 | | | INITIAL RELEASE | 2-12-08 | JRM |
| Rev-1.1 | | | Added MS-3102 Data | 6-4-08 | JRM |
| Rev-1.2 | | | Revised MS-Pin Data | 12-22-08 | JRM |
| Rev-1.3 | | | Revised-slot, hole, top, vent dim | 3-12-09 | JRM |
| Rev-1.4 | | | Updated notes | 12-04-10 | JRM |

DWG. NO. LS03-06000
 SH. 1 of 1
 REV. C Rev-14

| | | | |
|---|-----|-------|--|
| 1 | 4 | LS01- | MS35206 Screw 4-40 PPH Phillips Pan Head |
| 2 | 4 | LS01- | MS - Nut keppts 4-40 - with lock washer |
| 3 | 8 | LS01- | MS - screw for Front / Rear Panel ? |
| 4 | A/R | LS01- | Loctite 290 to secure/lock nuts |
| 5 | | LS01- | |

| ITEM | QTY. | PART NO. | DESCRIPTION |
|---|------|-------------|-------------|
| UNLESS NOTED OTHERWISE TOLERANCE BLOCK: DIMENSIONS ARE IN INCHES DECIMALS ANGULAR XX ±.030 ±1° XXX ±.015 XXXX ±.0005 | | | |
| PROPRIETARY THIS DOCUMENT AND THE DATA DISCLOSED HEREWITH IS NOT TO BE REPRODUCED, USED, OR DISCLOSED IN WHOLE OR IN PART TO ANYONE WITHOUT WRITTEN AUTHORIZATION FROM LONE STAR AVIATION | | | |
| DO NOT SCALE DRAWING | | APPROVALS | DATE |
| MATERIAL N/A | | JR MANTOS | 2-12-08 |
| FINISH N/A | | APPROVED BY | |
| | | NEXT ASSY. | |



LONE STAR AVIATION CORP.
Mansfield, Texas

| | | | |
|-------|-------------|--------------------|--------|
| TITLE | | DC to AC Inverters | |
| | | 500 Watts | |
| SIZE | DRAWING NO. | REV 1.4 | |
| B | LS03-06000 | | |
| SCALE | NONE | SHEET | 1 OF 1 |

- Note:
1. Mfg to provide LSA with metal fabrication and anodizing.
 2. Silk-screening and label finalized by LSA.
 3. Filtering, remote control, ms connector pcb added to to BOM, design.
 4. Fans, high reliability bearing, temp added.
 5. Conformal coating added.
 6. Temp sensors, (mil) added.

Lone Star Aviation, Inc.
Title: VP Operations
James Ray Mantos
604 So. Wisteria Street
Mansfield, Texas 76011
682-518-8882
682-518-8831 fax